

PRESSURIZED SECONDARY WATER POLICY

PURPOSE: To assure a fair, timely, orderly and workable procedure to assist Springville City Pressurized Secondary Water Users a smooth transition from the use of Culinary Water to Pressurized Secondary Water for outdoor landscape watering purposes.

SUMMARY:

- The City, through a Private Contractor(s) shall provide potential Pressurized Secondary Water Users with a connection point to the Pressurized Secondary Water System at the property line. Connection point to be housed in a Pressurized Secondary Water Box that includes:
 - Secondary Water Meter
 - Shut-off Valve
- Culinary Water Users who have Pressurized Secondary Water available to their property and are connected to the City's Pressurized Secondary Water System by September 30, 2016 shall:
 - Receive a one-time City subsidy in the amount of \$250 to be credited to their utility account.
 - Not be assessed the Pressurized Secondary Water Meter Fee of \$270
 - Not be assessed a Switch-Over Inspection Fee of \$50
- Culinary Water Users who fail to connect to the City's Pressurized Secondary Water System by September 30, 2016, or refuse to connect to the City's Pressurized Secondary Water System and continue to use Culinary Water for Landscaping/Sprinkler/or Drip Irrigation Systems shall:
 - Not receive a one-time City subsidy in the amount of \$250.
 - Be assessed the Pressurized Secondary Water Meter Fee of \$270
 - Pay the Switch-Over Inspection Fee of \$50 when they connect in the future to the City's Pressurized Secondary Water System.
- Culinary Water and Secondary Water rates to all users within the Pressurized Secondary Water Service Area where Secondary Water is "**available**" shall be as follows:
 - Monthly Base Rate as outlined in the City's Comprehensive Fee Schedule for Culinary Water.
 - Tiered Culinary Water Rate set at 1.10 times the normal Tiered Culinary Water Rate as set forth in the City's Comprehensive Fee Schedule.
 - Tiered Secondary Water Rate set at 0.90 times the normal Tiered Culinary Water Rate as set forth in the City's Comprehensive Fee Schedule.
 - As mentioned above, "**available**" shall mean any active existing Secondary Water main distribution pipeline pressurized with Secondary Water that is located within seventy-five (75) feet of the property line.
- In the event that an Existing Residential property owner or Existing Commercial Development has placed obstructions on, over, or adjacent to the Secondary Water Service Connection point making it impractical or impossible for the City to provide a connection point to the Pressurized Secondary Water System at the property line, the City may choose to NOT install a Pressurized Secondary Water Box and associated meter and shut-off valve.

SECONDARY WATER LAWS & REGULATIONS:

Federal Law: Safe Drinking Water Act of 1974, Public Law 93-523, Water purveyors are responsible for the quality of drinking water delivered. This required that contamination from backflow be eliminated.

State Regulation and Code: Utah Code, Section 19-4-112 states “there shall be no cross connection between the potable (drinking water) and non-potable (auxiliary water) systems”.

Utah Public Drinking Water Rule R-309-105:

- Unprotected cross-connection that may affect water quality, are not allowed. Approved backflow prevention assemblies must be used.
- Backflow assemblies must be tested on an annual basis by a certified tester.
- Drinking water systems shall be protected for cross-connection from a pressurized Secondary Water system.

Utah Plumbing Code

- Prohibits cross-Connections.
- Requires annual testing on all backflow assemblies.

DEFINITIONS:

- Culinary Water System – The City’s drinking water system regulated by the State of Utah Bureau of Drinking Water/Sanitation.
- Cut-Over Date – the date at which a potential Pressurized Secondary Water User must have all landscaping/sprinkler/or drip irrigation systems properly **disconnected** from the City’s Culinary Water System and **connected** to the City’s Pressurized Secondary Water System. ***This date is September 30, 2016***
- Existing Development – All residential and commercial culinary water users located in the Pressurized Secondary Water Service Area of the City who have received a Certificate of Occupancy from the City’s Community Development Department before the original date of adoption of this Pressurized Secondary Water Policy.
- Landscaping/Sprinkler/or Drip Irrigation Systems – The outdoor watering systems used by Residential or commercial establishments for landscape watering purposes.
- New Development – All New Residential Subdivision or Commercial Development that is under construction at the time of the original adopting of this policy **both before and after** the Cut-Over Date.
- Pressurized Secondary Water System – The City’s pressurized untreated water storage, transmission and delivery system for non-culinary water uses such as outdoor landscaping.
- Pressurized Secondary Water Service Area - All areas of the City west of the 400 West railroad tracks, including the Jessie’s Brook Plat B, C, & D subdivisions in the southern part of the community that have Pressurized Secondary Water main pipelines with available capacity. **“Available”** shall mean any active existing Secondary Water main distribution pipeline

pressurized with Secondary Water that is located within seventy-five (75) feet of the property line.

- **Secondary Water** – Pressurized Non-Potable Irrigation Water that comes from creeks and reservoirs. The intended use of Secondary Water is for outdoor landscaping water needs. Common usage of terms such as irrigation water, non-potable water, and ditch water are synonymous with Secondary Water.
- **Secondary Water Service Connection** – The separate and individual pipeline connection from the City’s pressurized Secondary Water main pipeline to the property line.
- **Switch-Over Inspection** – An inspection by City, or City approved personnel to verify all landscaping/sprinkler/or drip irrigation systems are properly **disconnected** from the City’s Culinary Water System and **connected** to the City’s Pressurized Secondary Water System.
- **West Fields** – The area of Springville City generally west of the 400 West railroad tracks, including the Jessie’s Brook Plat B, C, & D subdivisions in the southern part of the community.

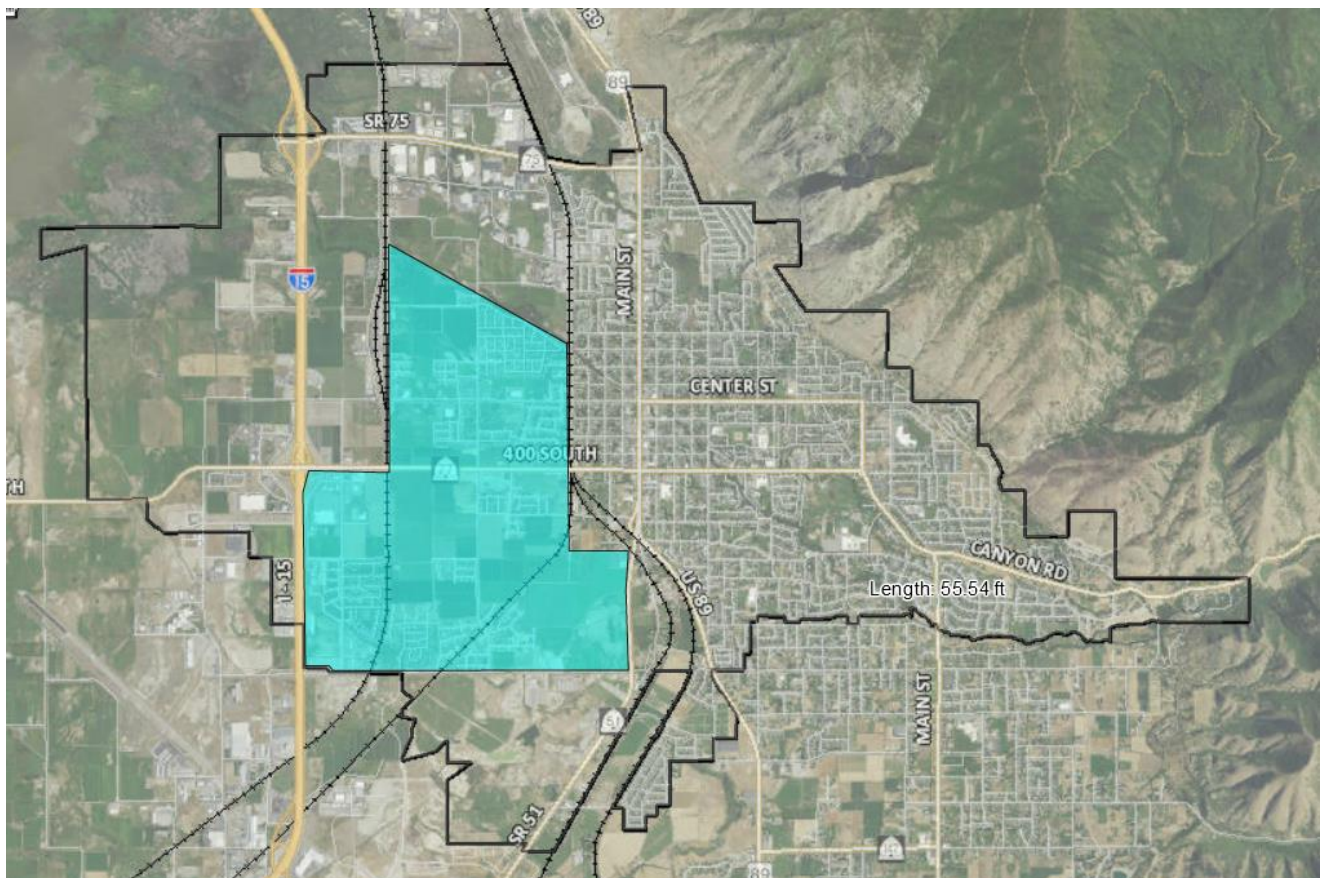


Figure 1: Pressurized Secondary Water Service Area

BACKGROUND:

Springville City has recently constructed a pressurized Secondary Water storage, transmission and delivery system with the ability to service the area of the City generally west of the 400 West railroad tracks in the West Fields. This storage and delivery system has been connected to the existing pressurized Secondary Water distribution system installed as development occurred in the past in the West Fields.

The construction of a pressurized Secondary Water system benefits the entire community by lowering the culinary water demand, allowing the City to avoid future expensive surface water treatment costs to provide additional culinary water.

PROVIDING PRESSURIZED SECONDARY WATER:

The City will provide, through a Secondary Water Service Connection, pressurized Secondary Water to parcels in the Pressurized Secondary Water Service Area at pressures ranging from 40 psi to 125 psi, depending on the parcel elevation (with respect to the City's Pressurized Secondary Water Pond located in the mouth of Hobble Creek Canyon).

Pressurized Secondary Water will be provided by the City on an annual basis beginning in mid-April and terminating sometime in September depending on availability of Secondary Water.

OUTDOOR LANDSCAPING/SPRINKLER/OR DRIP IRRIGATION SYSTEM DESIGN PARAMETERS:

All outdoor landscaping/sprinkler/or drip irrigation systems shall be designed for the minimum supplied static pressure of 40 psi. If needed, it shall be the Pressurized Secondary Water user's responsibility to install pressure reducing equipment should the pressure at the Service Connection be greater than 40 psi.

CONNECTION TO THE PRESSURIZED SECONDARY WATER SYSTEM:

All users of the City's culinary water system that are located in the Pressurized Secondary Water Service Area are encouraged to connect to and use the City's Pressurized Secondary Water System for outdoor landscaping/sprinkler/or drip irrigation systems.

Users of the City's culinary water system that do not have existing outdoor landscaping/sprinkler/or drip irrigation systems shall use the City's Pressurized Secondary Water System when using garden hoses or other irrigation devices for outdoor watering needs.

The Secondary Water Service Connection is located in a Secondary Water box near the front property line. The connection of the property owner's outdoor landscaping/sprinkler/or drip irrigation systems shall meet the requirements of the Utah Plumbing Code and the current City Standards and Specifications regarding Pressurized Secondary Water installation and connection.

MISSING PRESSURIZED SECONDARY WATER CONNECTION POINT:

Existing Development: In the event that a City owned and operated pressurized Secondary Water distribution system has been installed in front of a given parcel, yet a Secondary Water Service Connection has not been installed on the property, the City shall install the Secondary Water Service Connection, meter box, meter and other related appurtenances at the City's expense.

New Development: All new development shall meet the requirements of the current City Standards and Specifications regarding Pressurized Secondary Water Connection Point installation from the pressurized Secondary Water main distribution pipeline to the individual property lines. All pressurized Secondary Water installation costs associated with said requirements shall be the responsibility of the property owner/developer.

ACTUAL CONNECTION OF OUTDOOR LANDSCAPING/SPRINKLER/OR DRIP IRRIGATION SYSTEMS:

The actual physical connection of Existing Residential and Commercial outdoor landscaping/sprinkler/or drip irrigation systems to the City's Secondary Water Service Connection point is to be accomplished by the property owner.

SECONDARY WATER CONNECTION AND INSPECTION FEES:

Connection and Inspection Fees shall be as follows:

Existing Development: Policy regarding Existing Residential Subdivision and Commercial Development within the Pressurized Secondary Water Service Area at the time of the original adopting of this Pressurized Secondary Water Policy through September 30, 2016:

- **Grandfathered Connections:** Residential and Commercial Pressurized Secondary Water users who are properly disconnected from the City's Culinary Water System and properly connected to the City's Pressurized Secondary Water System before the Cut-Over Date of September 30, 2016 shall:
 - Receive a one-time City Subsidy of \$250, to be credited to the Secondary Water User's utility account, to cover the cost of modifications needed to connect the Residential or Commercial Pressurized Secondary Water user's outdoor landscaping/sprinkler/or drip irrigation systems to the City's Pressurized Secondary Water System.
 - NOT pay the Pressurized Secondary Water Meter fee, as outlined in the City's Comprehensive Fee Schedule.
 - NOT pay the Switch-Over Inspection Fee. The Switch-Over Inspection is required to verify a successful and proper Switch-Over process from Culinary Water to Secondary Water.
- **Connections After the Cut-Over Date:** Residential and Commercial Pressurized Secondary Water users who choose to, or refuse to connect after the Cut-Over Date of **September 30, 2016** shall:

- NOT receive a one-time City Subsidy of \$250.
- Pay the Pressurized Secondary Water Meter fee, as outlined in the City's Comprehensive Fee Schedule.
- Pay the Switch-Over Inspection Fee required by the City. The Switch-Over Inspection is required to verify a successful and proper Switch-Over process from Culinary Water to Secondary Water.

New Development (Residential Subdivision and Commercial): Policy regarding New Residential Subdivision and Commercial Development within the Pressurized Secondary Water Service Area that is under construction at the time of the original adopting of this Pressurized Secondary Water Policy both before and after the Cut-Over Date of September 30, 2016:

- **Connections Before the Cut-Over Date:** Residential and Commercial Pressurized Secondary Water users who have received a "Certificate of Occupancy" from the City's Community Development Department, and have properly connected their outdoor landscaping/sprinkler/or drip irrigation systems to the City's Secondary Water Service Connection point before the Cut-Over Date of September 30, 2016 shall:
 - Meet the requirements of the current City Standards and Specifications regarding Pressurized Secondary Water installation and connection to the City's Pressurized Secondary Water System. All pressurized Secondary Water installation costs associated with said requirements shall be the responsibility of the property owner/developer.
 - Receive a one-time City Subsidy of \$250, to be credited to the Secondary Water User's utility account, to cover the cost of modifications needed to connect the Residential or Commercial Pressurized Secondary Water user's outdoor landscaping/sprinkler/or drip irrigation systems to the City's Pressurized Secondary Water System.
 - NOT pay the Pressurized Secondary Water Meter fee, as outlined in the City's Comprehensive Fee Schedule.
 - NOT pay the Switch-Over Inspection Fee. The Switch-Over Inspection is required to verify a successful and proper Switch-Over process from Culinary Water to Secondary Water.

- **Connections After the Cut-Over Date:** Residential and Commercial Pressurized Secondary Water users who have **NOT** received a "Certificate of Occupancy" from the City's Community Development Department before the Cut-Over Date of September 30, 2016 shall::
 - Meet the requirements of the current City Standards and Specifications regarding Pressurized Secondary Water installation and connection to the City's Pressurized Secondary Water System. All pressurized Secondary Water installation costs associated with said requirements shall be the responsibility of the property owner/developer.
 - NOT receive a one-time City Subsidy of \$250.

- Pay the Pressurized Secondary Water Meter fee, as outlined in the City's Comprehensive Fee Schedule.
- Pay the Switch-Over Inspection Fee required by the City. The Switch-Over Inspection is required to verify a successful and proper Switch-Over process from Culinary Water to Secondary Water.

APPLICATION PRODECURE:

Before connecting to the City's Pressurized Secondary Water System, all potential Pressurized Secondary Water Users shall fill out an application for Secondary Water service. Applications can be picked up at the City's cashier's windows at the Springville City Civic Center located at 110 South Main Street, Springville, Utah; or can be acquired on-line at www.springville.org.

Completed applications can be submitted and associated fees paid at the City's cashier's windows at the Springville City Civic Center located at 110 South Main Street, Springville, Utah.

CULINARY WATER & PRESSURIZED SECONDARY WATER RATES AND BILLING:

Users of water from the City's culinary water system that **have pressurized** Secondary Water "**available**" to their parcel(s), shall pay **modified** charges and rates for Culinary and Secondary water as follows:

"Available" shall mean any active existing Secondary Water main *distribution* pipeline pressurized with secondary water that is located within seventy-five (75) feet of the property line.

CULINARY WATER USERS – FEES & CHARGES

Residential Units within the Springville City boundaries with a Meter

1. The following fees are applicable for water usage after the winter usage reading is made sometime in March and until a pre-winter reading is made sometime in October:
 - (a) A minimum culinary water base fee on each bill as outlined in the City's Comprehensive Fee Schedule under "Residential Culinary Water Rates (Secondary Water Available)." One bill will be sent each month. The monthly reading will be rounded down to the nearest thousand; and
 - (b) Culinary Water usage shall be billed at a rate of **1.10 times the Usage Tiers** described in SECTION 1(b) of this Resolution, and as shown in the City's Comprehensive Fee Schedule under "Residential Culinary Water Rates (Secondary Water Available)."
2. The following fees are applicable during the winter months between the October pre-winter reading and March reading. Meters are not read monthly:

- (a) A minimum culinary water base fee each month as outlined in the City's Comprehensive Fee Schedule under "Residential Culinary Water Rates (Secondary Water Available)." will be charged on the monthly bill; and
- (b) The total amount of water used during the winter will be read and rounded down to the nearest thousand gallons in March of each year. The user will not be charged for 5,000 gallons times the number of months between readings; and
- (c) There will be a "Winter Month Charge", as outlined in the City's Comprehensive Fee Schedule under "Residential Culinary Water Rates (Secondary Water Available)" for each thousand gallons or portion thereof used in excess of the amount set forth in subsection (b) above on the March bill **at a rate of 1.10 times the Winter Month Charge, Over 5,000 gallons as described in Section 1(b) of this Resolution.**

Commercial, Industrial, or Residential with a Master Meter

1. Industrial water users are defined as any customer connected to the City's Culinary Water System that uses in excess of 10,000,000 gallons per month. Rates shall be billed in accordance with the City's Comprehensive Fee Schedule under "Industrial Culinary Water Customers (Secondary Water Available)."
 - (a) A minimum base fee as outlined in the City's Comprehensive Fee Schedule under "Industrial Culinary Water Customers (Secondary Water Available)" will be billed each month.
 - (b) An additional fee for each one-thousand gallons will also be billed as outlined in the City's Comprehensive Fee Schedule under "Industrial Culinary Water Customers (Secondary Water Available)."

2. Commercial water users are defined as any non-industrial or non-residential customer connected to the City's Culinary Water System.
 - (a) A minimum base fee as outlined in the City's Comprehensive Fee Schedule under "Commercial & Master Meter Culinary Water Customers (Secondary Water Available)" will be billed each month.
 - (b) An additional fee for each one-thousand gallons will also be billed as outlined in the City's Comprehensive Fee Schedule under "Commercial & Master Meter Culinary Water Customers (Secondary Water Available)."

3. Residential water users served by a Master Meter are defined as residential water customers within or outside the City boundaries that are connected to the City's Culinary Water System via a Master Meter, but served by a private water system serving multiple (greater than three) residences.

- (a) The rates and fees for residential water users served through a Master Meter shall be computed by taking the total monthly reading and dividing it by the number of residential water connections served by the respective Master Meter. This calculated individual volume will be applied to the Usage Tier rate structure as outlined in the City's Comprehensive Fee Schedule under "Residential Culinary Water Rates (Secondary Water Available)" and billed accordingly.

SECONDARY WATER USERS – FEES & CHARGES

Residential Units within the Springville City boundaries with a Secondary Water Meter that is connected to the City's Secondary Water System

1. The following fees are applicable for water usage after the winter usage reading is made sometime in March and until a pre-winter reading is made sometime in October:
 - (a) A minimum Secondary Water Base Monthly Fee on each bill as outlined in the City's Comprehensive Fee Schedule under "Residential Secondary Water Rates." One bill will be sent each month. The monthly reading will be rounded down to the nearest thousand; and
 - (b) Secondary Water usage shall be billed at a rate of **0.90 times the Usage Tiers** described in SECTION 1(b) of this resolution, and as shown in the City's Comprehensive Fee Schedule under "Residential Secondary Water Rates."

Commercial, Industrial, or Residential with a Master Meter

1. Industrial water users are defined as any customer connected to the City's secondary water system that uses in excess of 10,000,000 gallons per month. Rates shall be in accordance with the City's Comprehensive Fee Schedule under "Industrial Secondary Water Customers (Secondary Water Available)."
 - (a) A minimum base fee as outlined in the City's Comprehensive Fee Schedule under "Industrial Secondary Water Customers (Secondary Water Available)" will be billed each month.
 - (b) An additional fee for each one-thousand gallons will also be billed as outlined in the City's Comprehensive Fee Schedule under "Industrial Secondary Water Customers (Secondary Water Available)."
2. Commercial water users are defined as any non-industrial or non-residential customer connected to the City's secondary water system.

- (a) A minimum base fee as outlined in the City's Comprehensive Fee Schedule under "Commercial & Master Meter Secondary Water Customers (Secondary Water Available)" will be billed each month.
 - (b) An additional fee for each one-thousand gallons will also be billed as outlined in the City's Comprehensive Fee Schedule under "Commercial & Master Meter Secondary Water Customers (Secondary Water Available)."
3. Residential secondary water users served by a Master Meter within or outside the City boundaries that are connected to the City's Secondary Water System via a Master Meter, but served by a private water system serving multiple (greater than three) residences shall be billed as follows:
- (a) The rates and fees for residential water users served through a Master Meter shall be computed by taking the total monthly reading and dividing it by the number of residential water connections served by the respective Master Meter. This calculated individual volume will be applied to the Usage Tier rate structure as outlined in the City's Comprehensive Fee Schedule under "Residential Culinary Water Rates (Secondary Water Available)" and billed accordingly.